

SUB

NIEDERSÄCHSISCHE STAATS- UND
UNIVERSITÄTSBIBLIOTHEK GÖTTINGEN

Tomorrow's Research Heritage



GEORG-AUGUST-UNIVERSITÄT
GÖTTINGEN

Overview

I.WHAT is Research Heritage?

II.The Data revolution

III. Information professions at the crossroads

IV.What can we do?

V.Conclusion

I. WHAT IS RESEARCH HERITAGE?

Research is about nature, mankind and knowledge



- „A natureza é o único livro que oferece grande conteúdo em todas as folhas.“
- „Die Natur ist das einzige Buch, das auf allen Blättern großen Gehalt bietet.“

Goethe

What is research? – Observing nature



What is research? – Collecting evidence



What is research? – Documenting

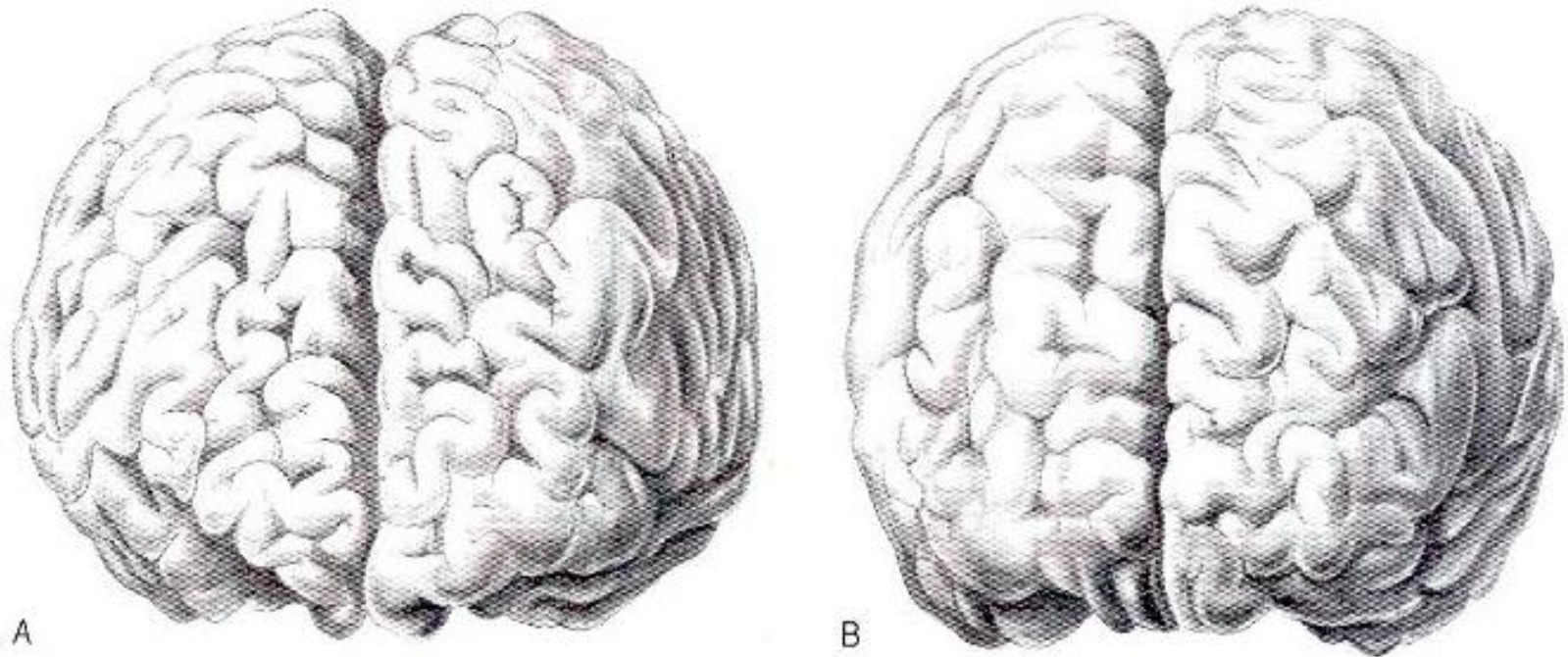


FIGURE 4-2. Reproduced from Wagner (1860), Table 3, showing the frontal lobe of the brain of Gauss (A) compared with that of a worker, age 57 (B). There is a difference, but part of it is explained by the "stenogyrencephalic" (numerous, narrow gyri) pattern in the former and the "eurygyrencephalic" (fewer but broader gyri) pattern in the latter. Both Retzius' types may occur in well-developed brains. (After Meyer, 1977.)

What is research? – Communication



What is research heritage? – Food for thought!

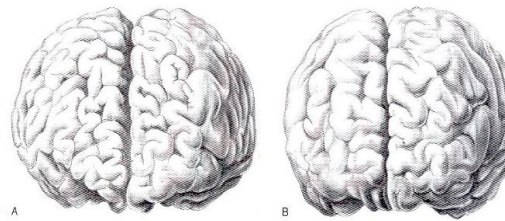
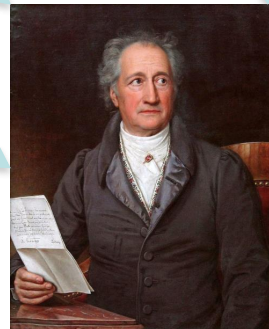


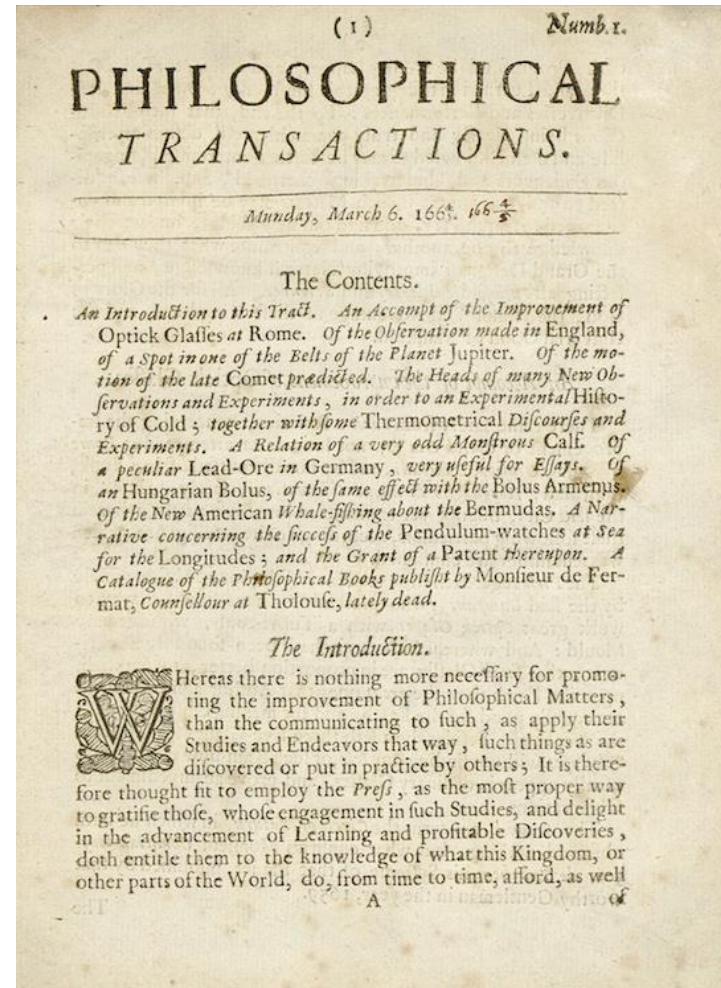
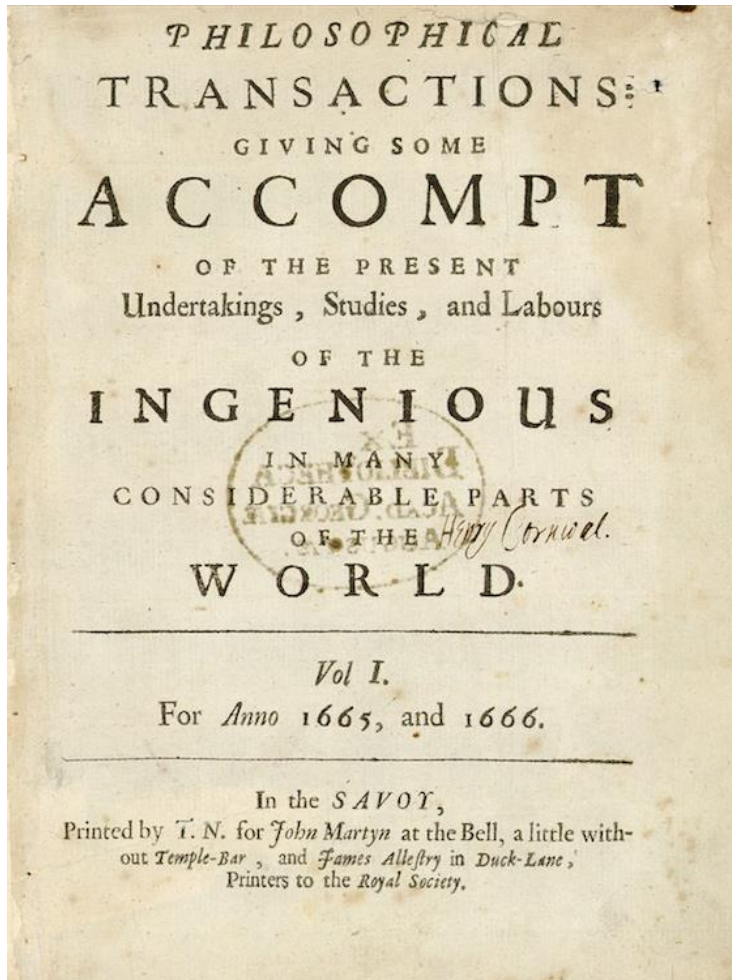
FIGURE 4-2. Reproduced from Wagner (1860), Table 3, showing the frontal lobe of the brain of Gauss (A) compared with that of a worker, age 57 (B). There is a difference, but part of it is explained by the “stencogyrencephalic” (numerous, narrow gyri) pattern in the former and the “eurygyrencephalic” (fewer but broader gyri) pattern in the latter. Both Retzius’ types may occur in well developed brains. (After Meyer, 1977.)



Reusing
Reproducing
Communicating

II. THE DATA REVOLUTION

The Separation of Libraries and Data through Labs



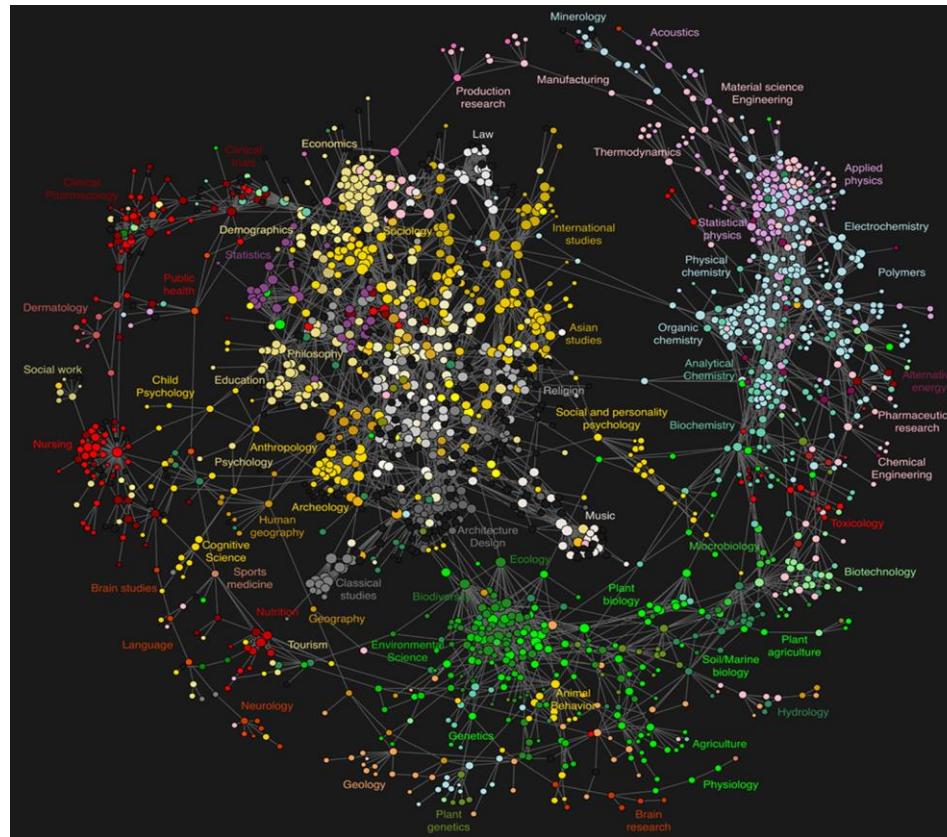
Literature is here to stay...



<http://www.flickr.com/photos/gorgmorg/9944210/>

It cannot be foreseen that literature will not be
at the heart of scholarship in the next decades.

...but new things come on top.



http://newsinfo.iu.edu/pub/libs/images/usr/9584_h.jpg

The world of knowledge has changed radically
– arriving at a universal encyclopaedia.

New types of users



<http://www.flickr.com/photos/derrypubliclibrary/3762251190>



<http://www.flickr.com/photos/fumi/2668956097/>

Library users are not only *readers* but *knowledge workers*.

New units of knowledge

UK PUBMED CENTRAL

Home About RSS Feeds Journal List Grant Lookup FAQ and Guides

calliphora erythrocephala Clear Search Advanced Search

Motoneurons of the flight power muscles of the blowfly *Calliphora erythrocephala*: structures and mutual dye coupling.
(PMID:17120285)

Abstract Cite this article

Schlurmann M, Haughey M, ...
Zoologisches Institut
The Journal of Comparative Neurology

Type: Journal Article
DOI: 10.1002/cne.21000

Abstract

The morphologies of the flight power muscles (DLM, DVM) and their biocytin-stained muscle fibers and axons were examined. The DLM and DVM 1 and the two fibers of the DVM 2 are innervated by five mesothoracic motoneurons, whereas the two fibers of the DVM 3 are innervated by two prothoracic motoneurons. In general, the motoneurons of each muscle have a common ventral soma cluster located in a characteristic position on the ipsilateral side of the thoracic ganglion, show similar dendritic arborizations in the mesothoracic wing neuropil, and have the same axon pathway. Only the soma of the common motoneuron of two dorsal fibers of the DLM is situated dorsally in the contralateral hemiganglion. The motoneurons of each muscle were found to be strongly dye coupled with each other, indicating that they are connected by gap junctions. In addition, the motoneurons of each muscle establish characteristic coupling patterns with the motoneurons of the other flight power muscles on both sides of the thorax and with two bilateral groups of local mesothoracic interneurons. The revealed coupling patterns are assumed to be of major relevance for the generation of the characteristic, rhythmic flight activity of the motoneurons described in previous studies.

Read Article at WileyInterScience (Subscription required)

Privacy Policy | Disclaimer | Copyright | Accessibility

<http://www.ukpme.co.uk>

EMBL-EBI Help | Feedback

Databases Tools Research Training Industry About Us Help Site Index

ChEBI Home
Advanced Search
Browse
Submissions
Downloads
Documentation
Developer Resources
Preferences
Contact ChEBI

EBI > Databases > Small Molecules > ChEBI > Main

cobalt atom (CHEBI:27638)

Main Automatic Xrefs

ChEBI Name **cobalt atom**
ChEBI ID **CHEBI:27638**
Stars **☆☆☆** This entity has been manually annotated by the ChEBI Team
Secondary ChEBI IDs CHEBI:3788, CHEBI:775236, CHEBI:23335

See structure as: Image Applet

- Find compounds which contain this structure
- Find compounds which resemble this structure

InChI InChI=1S/Co
InChIKey InChIKey=GUTLYVDDKVIGB-UHFFFAOYSA-N
SMILES [Co]
Formula
Co
Net Charge 0
Mass 58.93320
ChEBI Ontology

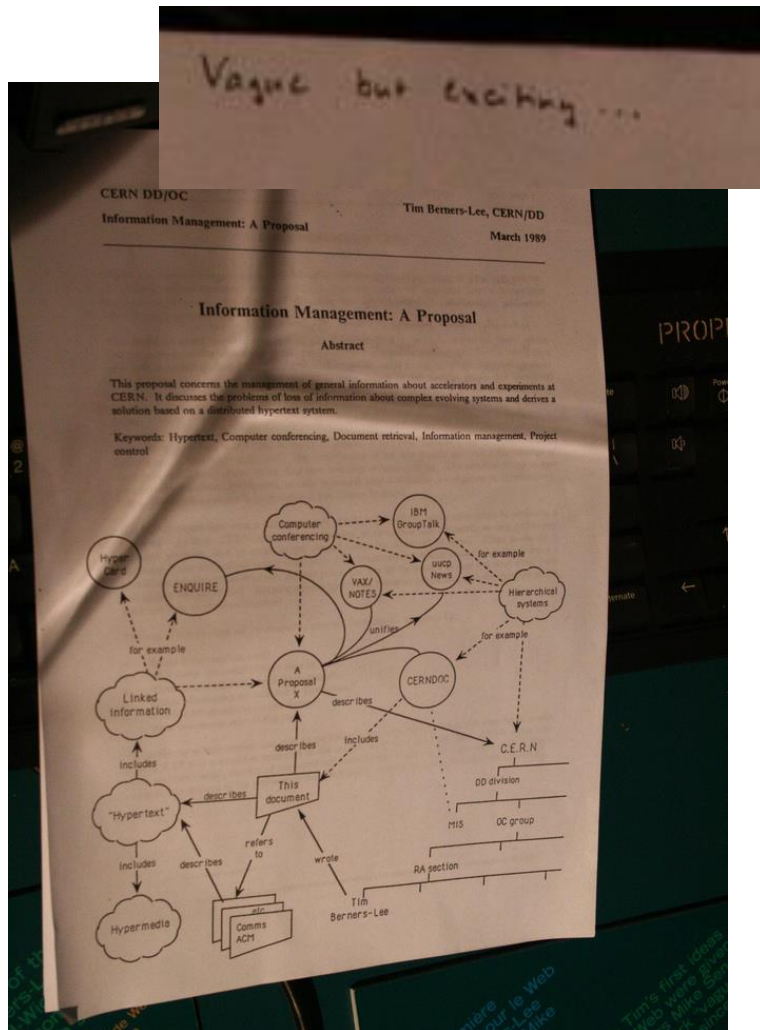
Highlight Terms

Gene Ontology(3) Species(1) Chemicals(1)

...dinal and the three dorsoventral flight power
...by means of cobalt backfills and intracellular
...aptic motoneurons supplying the four ventral

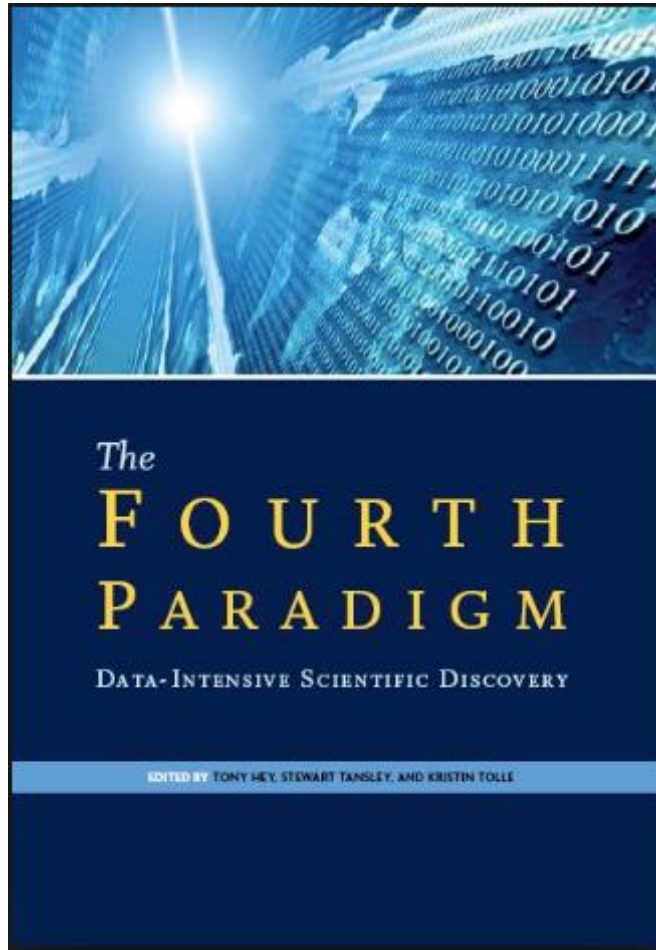
Enhanced publications are a continuum of textual resources and underlying data.

New technology



Complex knowledge resources can now be modelled and linked on the web – even for inferential computing.

Data at the heart of research



What changed? The atomisation of knowledge resources

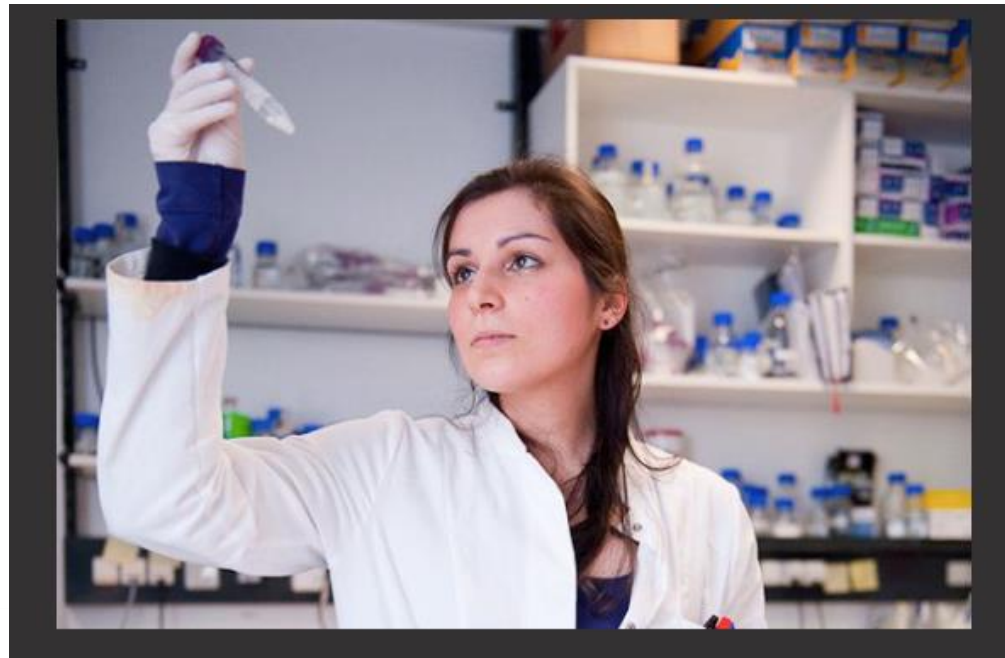


Nucleic Acids Research



arXiv.org

SCIENTIFIC DATA



What stayed? Research heritage is food for thought!

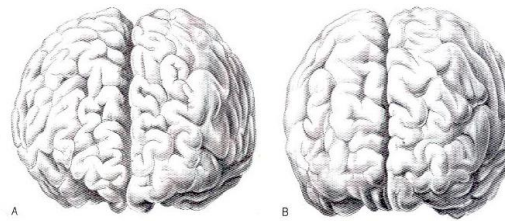
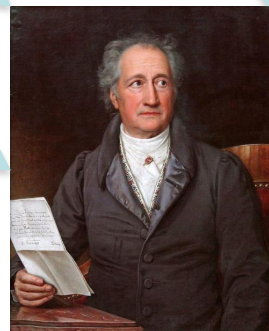
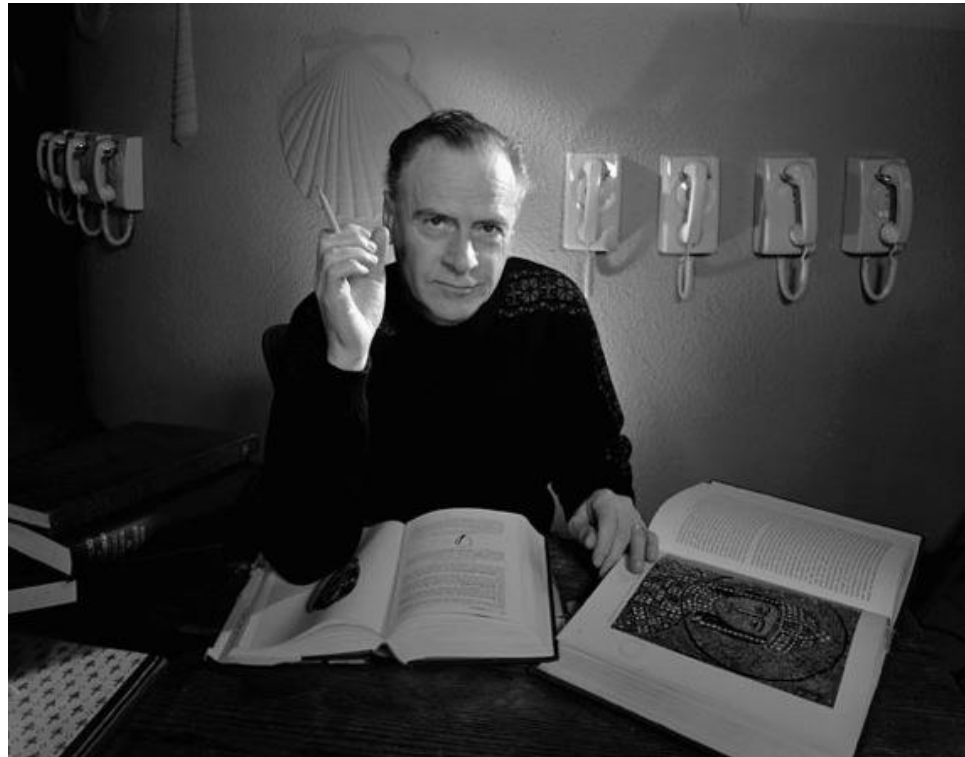


FIGURE 4-2. Reproduced from Wagner (1860), Table 3, showing the frontal lobe of the brain of Gauss (A) compared with that of a worker, age 57 (B). There is a difference, but part of it is explained by the "stencyrrencephalic" (numerous, narrow gyri) pattern in the former and the "eurygyrencephalic" (fewer but broader gyri) pattern in the latter. Both Retzius' types may occur in well developed brains. (After Meyer, 1977.)



McLuhan's *Sensorium*



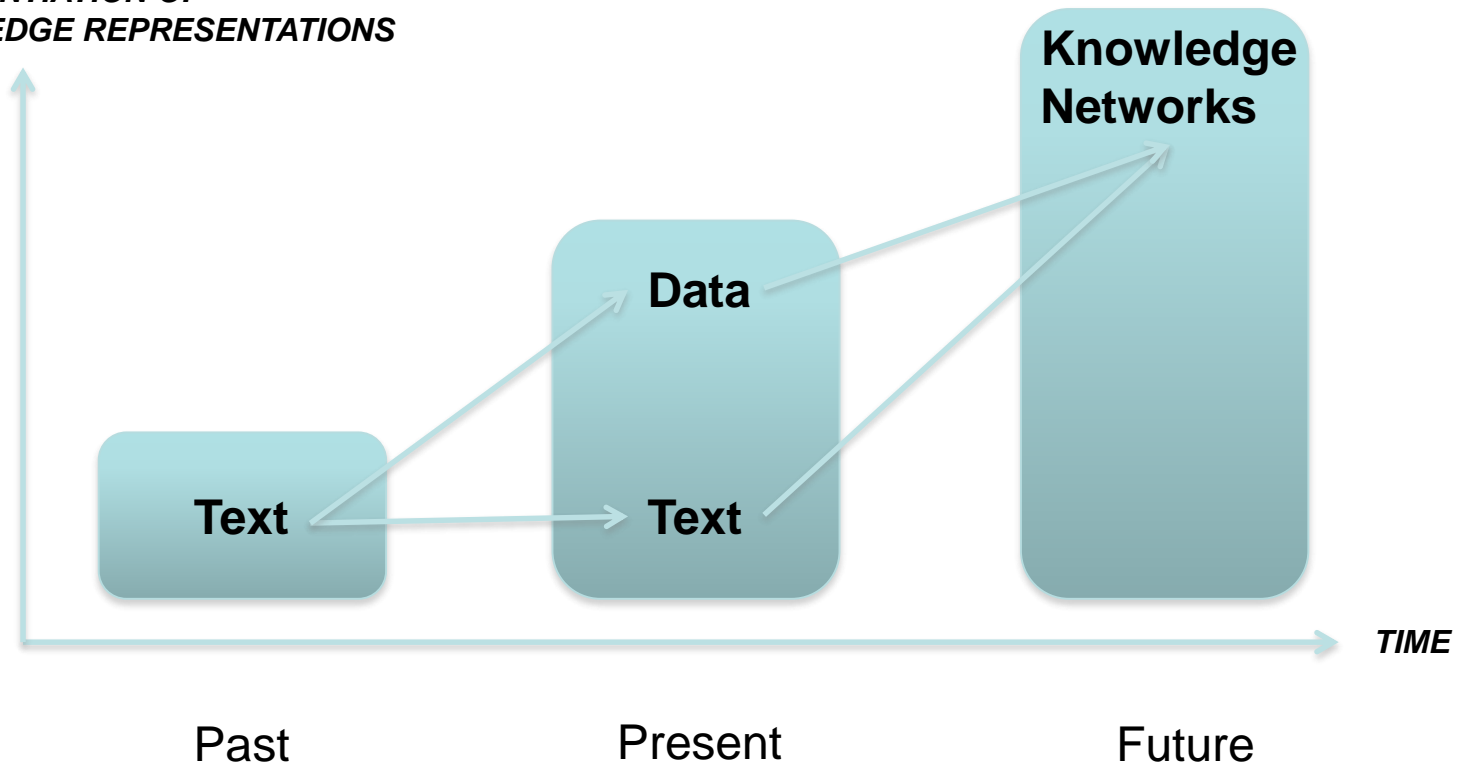
www.theparisreview.org/.../2011/01/mcluhan.jpg

There is no principal difference between physical and digital knowledge resources ('media') – both are the extensions of human needs

III. Information professions at the crossroads

The future belongs to knowledge networks

**DIFFERENTIATION OF
KNOWLEDGE REPRESENTATIONS**



Information professions at the crossroads

- The future will bring even more complex knowledge networks
- Text is not the exclusive form of knowledge representation
- This challenge is too large to be mastered alone
- All information professions need to transform
- All information professionals need to transform together to create tomorrow's research heritage – otherwise a new profession might take over

IV. WHAT CAN WE DO?

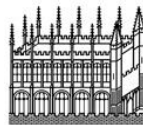
Look at Libraries Practice



Ten recommendations for libraries to get started with research data management

Final report of the LIBER working group on E-Science / Research Data Management

Look at Archivists' Practice



Bodleian Electronic Archives and Manuscripts

Bodleian Libraries
UNIVERSITY OF OXFORD

[Home](#) [Bodleian Libraries](#) [Contact](#)

Website [Catalogue \(SOLO\)](#)

Search this site



[ABOUT US](#)

[COLLECTIONS](#)

[BODLEIAN LIBRARIES' WEB ARCHIVE](#)

[NEWS](#)

Digital archives

Find out more about our digital holdings...

[More...](#)

... house, Beechurst, in Love Lane, been three years old at the time, a patch of unkempt grass surrounded by a garden. On re-visiting the house it was a very modest home, but the site was of great importance for its safety and security. Beyond our walls a high wall separated us from a terraced row of houses, and by miners from the surrounding area. We used to play with the miner...

[Contact us](#) [Location](#)

Contact us

For queries relating to born-digital archives email us at beam@bodleian.ox.ac.uk

 You can [nominate a website](#) for archiving with the Bodleian Libraries Web Archive [here](#).



BitCurator

Look at University Policy



ADVICE PAPER
No.14 - DECEMBER 2013

LERU ROADMAP FOR RESEARCH DATA

Engage in Expert Conversations



Refer to Existing Repositories

re3data.org
REGISTRY OF RESEARCH DATA REPOSITORIES

UNIVERSITY EXAMPLE: BIELEFELD

RDM Principles

Grundsätze zu Forschungsdaten an der Universität Bielefeld

Forschende an der Universität Bielefeld sollen Forschungsdaten* nach folgenden Grundsätzen als wertvolles wissenschaftliches Werk behandeln:

- | Über den gesamten Forschungszyklus – von der Datengewinnung bis zur Publikation – sollen Forschungsdaten sorgfältig und nach hohen fachlich einschlägigen Standards behandelt und dokumentiert werden.
- | Ein „Data Management Plan“ und fachspezifische Richtlinien** für Einrichtungen und Projekte soll durch die jeweils verantwortliche Leitung bereitgestellt werden – vor allem in jedem neuen, Daten-intensiven Drittmittelantrag.
- | Das Forschungsdaten-Management in Einrichtungen und Projekten soll auf eine möglichst breite und langfristige Nutzung in Forschung, Anwendung und Öffentlichkeit ausgerichtet sein, wobei Verwertungsinteressen, der Schutz persönlicher Daten und Verpflichtungen gegenüber Dritten ausgewogen berücksichtigt werden.
- | Zur nachhaltigen Verankerung und Entwicklung eines qualitätvollen Forschungsdaten-Managements soll die fachspezifische Methodenausbildung sowie die Vermittlung von Prinzipien guter wissenschaftlicher Praxis in Lehre und Weiterbildung angemessen thematisiert werden.

**Forschungsdaten stellen im weitesten Sinne Primärdaten, Sekundäranalysen, Visualisierungen, Modelle, Analysewerkzeuge, Objektsammlungen oder Produkte dar, die während des wissenschaftlichen Arbeitsprozesses erzeugt und benutzt werden.*

Open Research

[Sign in](#)
[Home](#) [Projects](#) [Help](#)

Research for Cognitive Interaction

Projects

[View all issues](#) | [Overall spent time](#) | [Overall activity](#)

3D Indoor Scenes Database

Articulated Scene Model

The software implements a state-of-the-art algorithm for three dimensional scene segmentation. The algorithm intends to build up a robust static background model of the scene and extracts moveable and highly dynamic objects in the foreground. For system integration the package also includes application nodes for middleware connection and grabbing/visualization purposes....

BielefeldTypeLibrary

BTL – The Bielefeld Type Library (BTL)

The Bielefeld Type Library (BTL) is a collection of XML-based data descriptions that are exchanged between components (e.g. Icewing) or systems (e.g. BIRON/ToBI). It provides functionality for parsing/creating data objects and is currently available in C++/Java. For more detailed info please refer to the wiki....

Bonsai

Bielefeld Sensor and Actuator Interface

BonSAI is a robot behavior abstraction layer written in Java. It aims to provide a simple interface to various functions of a robotic system and can define behaviors and skills according to these functions....

CITEC Gentoo Portage Overlay

This is a repository of gentoo ebuilds mostly of software packages developed within the University of Bielefeld (CITEC/CoR-Lab) but also of open source software from third parties. You may use this overlay, please do not hesitate to file bugs. Be aware to use this overlay at your own risk. ...

emblued

Projects

 View closed projects





Uni from A to Z



Search

Uni Bielefeld » Faculty of Sociology » SFB 882 » Projects » Project INF

Navigation

[Home](#)[Programme](#)[Project Areas](#)[Projects](#)[Project A1](#)[Project A2](#)[Project A3](#)[Project A4](#)[Project A5](#)[Project A6](#)[Project B1](#)[Project B2](#)[Project B3](#)[Project B4](#)[Project B5](#)[Project C1](#)

Project INF

Information and Data Infrastructure

People Summary Publications

- Friedhoff, Stefan, Meier zu Verl, Christian, Pietsch, Christian, Meyer, Christian, Vompras, Johanna, & Liebig, Stefan (2013): *Social Research Data: Documentation, Management, and Technical Implementation within the SFB 882*. (SFB 882 Working Paper Series 16). DFG Research Center (SFB) 882 From Heterogeneities to Inequalities, Bielefeld.

[PUB](#) | [PDF](#) | [URL](#)

- Friedhoff, Stefan, Meier zu Verl, Christian, Pietsch, Christian, Meyer, Christian, Vompras, Johanna, & Liebig, Stefan (2013): *Replicability and Comprehensibility of Social Research and its Technical Implementation*. (RatSWD Working Paper Series 219). SCIVERO Press, Berlin.

[PUB](#) | [URL](#)

- Meier zu Verl, Christian (2013): Der praktische Charakter wissenschaftlicher Theorien. Bericht von der GWTF-Jahrestagung. *Technikfolgenabschätzung - Theorie und Praxis*, 22(1), 106–108

[PUB](#) | [URL](#)

- Kramer, Stefan, Leahey, Amber, Southall, Humphrey, Vompras, Johanna, & Wackerow, Joachim (2012): *Using RDF to Describe and Link Social Science Data to Related Resources on the Web*. (German Council for

News

- Besuch aus New York: Prof. Dr. Dalton Conley zu Gast im SFB 882

17.06.2013

- Neue Gastwissenschaftlerin im SFB 882: Prof. Dr. Elke Winter, University of Ottawa

10.06.2013

- Vortrag von Prof. Dr. Hans-Ulrich Wehler zum Thema "Soziale Ungleichheit in Deutschland"

18.04.2013

[all news](#)

Recent Publications

- Bilecen, Basak (2013): *Analyzing Informal Social Protection Across Borders: Synthesizing Social Network Analysis with Qualitative Interviews*

- Schunck, Reinhard (2013):

Inhalte <<

- Studien-Navigation -
- Verknüpfte Personen-Betriebsdaten im Anschluss an den ALLBUS
 - ALLBUS 2008
 - ALLBUS Betriebsbefragung 2009**
- Beschäftigungsverhältnisse als sozialer Tausch
 - BEATA Betriebsfallstudie
 - BEATA Beschäftigten-Befragung
 - BEATA Partner und Partnerinnen-Befragung
- Betrieb und Beschäftigung im Wandel: Betriebliche Beschäftigung:
 - SFB580-B2 Betriebspanel Welle 1
 - SFB580-B2 Betriebspanel Welle 2
 - SFB580-B2 Betriebspanel Welle 3
- Entwicklung und Validierung eines Diagnosewerkzeugs zur Erfas:
 - InnoKenn Experteninterviews
 - InnoKenn Fallstudien
 - InnoKenn Workshops
- Demografischer Wandel und der Arbeitsmarkt des öffentlichen Se
 - SFB580-B8 Intermediäre
 - SFB580-B8 kommunaler Vertreter
 - SFB580-B8 schulische Entscheidungsträger
- A balanced approach to understanding the shaping of human resc
- Abhängige Selbständigkeit in der Versicherungswirtschaft - Neue
- AEVO Betriebs- und Kammerbefragung 2007
- Affective Complementarity in Service Encounters
- Aging Workforce Management in der Automobilindustrie. Definitior

Suche nach Studien +

| | |
|-------------------------|---|
| Kurzbeschreibung | Der inhaltliche Fokus der Betriebsbefragung lag auf Sozialer Ungleichheit innerhalb von Betrieben. S Allgemeine Betriebsstrukturdaten, Marktposition des Betriebs, Mitbestimmung, Personalstruktur, Per: Qualifikationsgruppen, Entlohnung, Arbeitsbedingungen sowie methodische Fragen und Information |
| Untersuchungsgegenstand | Betriebe |
| Sektor | Öffentlich und privat |
| Branchen | Keine Branchenauswahl |
| Untersuchungsgebiet | Deutschland |

Durchführung

| | |
|-------------------------|---|
| Vorbereitende Maßnahmen | Dem Projekt vorgeschaltet war eine Pilotstudie im Rahmen einer rund 1000 Befragte umfassende Panels (SOEP) 2007. Darin wurden aktuell erwerbstätige und arbeitslos gemeldete Personen nac Betriebsstätte gefragt. Die angegebenen Adressen wurden bereinigt, so dass im Anschluss die B |
|-------------------------|---|

Sampling

| | |
|-------------------------------------|--|
| Auswahlverfahren | Ausgangspunkt waren die Befragten des ALLBUS 2008, die zum Zeitpunkt der Befragung in ein abhängig beschäftigt waren. Insgesamt waren dies 1.101 Personen. Davon machten 943 Persc genannten Adressen wurden anschließend in einer Recherche überprüft. 719 Adressen konnte entsprechenden Betriebe wurden kontaktiert. In 194 Fällen konnte schließlich ein Interview reali sich auf Betriebe, in denen zwei Beschäftigte an der ALLBUS Personenbefragung teilgenommer Personalverantwortlicher oder Betriebsleiter befragt. |
| Maßnahmen zur Erhöhung der Response | Es wurden gezielt Interviewer eingesetzt, die eine langjährige Erfahrung mit Betriebsstudien hab |

| Ebene | Anzahl Einheiten | Anzahl Personen pro Ebene (min.) | Anzahl Personen pro Ebene (max.) | Anteil erh. Mitglieder/Betr... (min.) | Anteil erh. Mitglieder/Betrieb (max.) |
|----------|------------------|----------------------------------|----------------------------------|---------------------------------------|---------------------------------------|
| Betriebe | 194 | | | | |

RDM Resolution

Resolution

Resolution on Research Data Management

Bielefeld University is firmly committed to supporting its academics in implementing the '**Principles and guidelines on handling research data at Bielefeld University**' from 19 July 2011 to promote a quality-assuring research data management.

1. The Rektorat requests applicants to take advantage of the university's advisory services – above all during the preparatory stage of any funding proposal requiring a data management plan (e.g. for the German Research Foundation, DFG)
2. The Rektorat encourages academics to publish their research data through a registered research data archive within their discipline, or, if this is not available, through the research data repository of Bielefeld University. Publication should take the interests of persons and companies into account and be based on binding licensing conditions.

To fulfil **Point 1**, the **Coordination Centre** for Research Data at the Bielefeld University Library offers comprehensive advisory services on data management planning and continuous data documentation.

In line with **Point 2**, Bielefeld University Library supports faculties and academia to interlink existing data services with the worldwide network of data archives. At the same time, the institutional repository **PUB – Publikationen an der Universität Bielefeld** offers services for the publication of research data. Directories such as the DFG-funded "**Registry of Research Data Repositories**" also list appropriate locations for depositing data.

(adopted by the Rektorat in its session held on 12 November 2013)

Institutional Repository



[Home](#) [Publications](#) [Data Publications](#) [Authors](#) [PUB Theses](#) [About PUB](#)  [Deutsch](#)

PUB – The Publication Server at Bielefeld University

[+ Add your publications](#)

- ✓ 40314 **Publications**
- ✓ 2522 **Individual Author Pages**
- ✓ **22 Data Publications**
- ✓ 7298 **Open Access Publications**
- ✓ 1471 **Theses**

Open Access at
Bielefeld University



Research Data Management



Support Publication Services

Susanne Riedel
Phone: 0521/106-4058
[publikationsdienste.ub](#)
[@uni-bielefeld.de](#)

PUB

Institutional Repository



[Home](#) [Publications](#) [Data Publications](#) [Authors](#) [PUB Theses](#) [About PUB](#)

[Deutsch](#)

22 Data Publications

2014 | *Research Data* | *PUB-ID: 2659774*

LEEP-B3

Diewald M, Schunck R, Abendroth A, Melzer SM, Reimann M, Pausch S (2014)

SFB 882. doi:10.4119/unibi/sfb882.2014.12

[PUB](#) | [DOI](#)

2014 | *Research Data* | *PUB-ID: 2659776*

[Arbeitsorganisationen und väterliche Lebensführung](#)

Beaufays S, Reimer T (2014)

SFB 882. doi:10.4119/unibi/sfb882.2014.13

[PUB](#) | [DOI](#)

2014 | *Research Data* | *PUB-ID: 2659766*

[Entstehung und Entwicklung devianten und delinquenten Verhaltens](#)

Reinecke J, Stemmler M, Pöge A, Wallner S, Meinert J, Schepers D, Sünkel Z, Weiss M, Wittenberg J, Kayed N (2014)

SFB 882. doi:10.4119/unibi/sfb882.2014.11

[PUB](#) | [DOI](#)

[+ Add your publications](#)

Filter Data Publications

▼ [Uni-Bi Authors](#)

▼ [Publishing Year \(5\)](#)

Display & Export

▼ [Hits per page: 100](#)

▼ [Citation Style: default](#)

▼ [Sorting](#)

▼ [Export as](#)

▼ [Embed as](#)

Institutional Repository

Eyetracking-Experiment zu situativen Einflüssen auf Gerechtigkeitsurteile

Friedhoff S, Liebig S, May M, Sauer C, Schneider S, Valet P (2014)

SFB 882. doi:[10.4119/unibi/sfb882.2014.8](https://doi.org/10.4119/unibi/sfb882.2014.8)

DOI [10.4119/unibi/sfb882.2014.8](https://doi.org/10.4119/unibi/sfb882.2014.8)

Research Data

Mark

Details

Authors **Friedhoff, Stefan**^{UniBi} ; **Liebig, Stefan**^{UniBi} ; **May, Melke**^{UniBi} ; **Sauer, Carsten**^{UniBi} ; **Schneider, Simone**^{UniBi} ; **Valet, Peter**^{UniBi}

Department SFB 882 Von Heterogenitäten zu Ungleichheiten
SFB 882 Teilprojekt A6




Abstract:

Ziel des Experimentes war es die Aufmerksamkeit der Befragten bei der Beantwortung von Vignetten zum Thema Einkommensgerechtigkeit unter bestimmten Rahmenbedingungen zu verfolgen. Die Experimentellen Bedingungen waren (1) Bezahlung vor dem Experiment / Bezahlung nach dem Experiment. (2) Kooperatives Priming (Scrambled Sentence Test)/Neutrales Priming. Die Befragten müssen im Vignettenmodul das Einkommen

Export

 Marked Publication
 Open Data PUB

Search this title in

 Google Scholar
 BASE
 Google

JOURNAL EXAMPLE: NATURE



Data-access practices strengthened

19 November 2014

PDF Rights & Permissions

In our continued drive for reproducibility, *Nature* and the Nature research journals are strengthening our editorial links with the journal *Scientific Data* and enhancing our data-availability practices. We believe that this initiative will improve support for authors looking for appropriate public repositories for their research data, and will increase the availability of information needed for the reuse and validation of those data.

In 2013, Nature journals introduced new editorial measures to promote reproducibility, and we continue to evaluate their impact and refine our policies. Our newly strengthened data-availability practices (go.nature.com/o5ykhe) reflect our preference that data be deposited in public repositories, and encourage researchers to expand on work published in the Nature journals by publishing further information in *Scientific Data*.



| Recent | Read | Commented | Emailed |
|--|------|-----------|---------|
| 1. Bullet-proof armour and hydrogen sieve add to graphene's promise <i>Nature</i> 27 November 2014 | | | |
| 2. US Ebola vaccine trial reports positive results <i>Nature</i> 26 November 2014 | | | |
| 3. Ornithology: Fowl domination <i>Nature</i> 26 November 2014 | | | |
| 4. Climate science: A climate trance <i>Nature</i> 26 November 2014 | | | |
| 5. Military science: Scientific spoils of war <i>Nature</i> 26 November 2014 | | | |

JOURNAL EXAMPLE: SCIENTIFIC DATA

SCIENTIFIC DATA

About *Scientific Data*

Scientific Data is an open-access, peer-reviewed publication for descriptions of scientifically valuable datasets. Our primary article-type, the **Data Descriptor**, is designed to make your data more discoverable, interpretable and reusable.

Selecting a repository

Although *Scientific Data* mandates the release of the datasets that accompany our manuscripts, we do not ourselves host data. Instead, we encourage submission of datasets to community-recognized data repositories where possible, and recommend deposition in [figshare](#) or the [Dryad Digital Repository](#) when no community resource is available or (at least temporarily) if the most appropriate repository does not support confidential peer-review. For more information on this policy please see below, and our [related blog post](#).

► Please see our list of [recommended data repositories](#)

Authors often present more than one kind of data in a Data Descriptor. As our articles link directly to each data record, publishing with us can facilitate the linking together of disparate types of data, and in such cases we recommend that each dataset be archived in the resource to which it is best suited. For example, raw and derived gene-expression data might best be deposited in ArrayExpress or GEO; however, the results of a principal component analysis, control qPCRs or blots, or associated phenotypic assays could be stored in, e.g., [figshare](#) or the Dryad Digital Repository.

View data repositories

- Life sciences:
 - nucleic acid sequence; protein sequence; molecular & supramolecular structure; neuroscience; omics; taxonomy & species diversity; life-science community resources
- Chemistry & chemical biology
- Environmental & geoscience
- Physics, astrophysics & astronomy
- Social sciences
- General science

Life sciences

Nucleic acid sequence

Sequence information should be deposited following the [MxS](#) guidelines.

Simple genetic polymorphisms or structural variations should be submitted to dbSNP or dbVar (please note that these repositories cannot accept sensitive data derived from human subjects); the NCBI Trace Archive may be used for capillary electrophoresis data, while SRA accepts NGS data only.

| | |
|---|---------------------------------------|
| DNA DataBank of Japan (DDBJ) | view BioSharing entry |
| EMBL Nucleotide Sequence Database (ENA) | view BioSharing entry |

JOURNAL EXAMPLE: F1000 RESEARCH

General Terms

7. Data availability

All articles in *F1000Research* that report original results should include the source data underlying the results, together with details of any software used to process the results. It is essential that others can see the source data in order to be able to replicate the study and analyse the data, as well as in some circumstances, reuse it. Failure to provide the source data for publication without good reason may result in your article being rejected. For detailed information about the type of data authors need to include when publishing an article in *F1000Research*, where the data can be stored, and how they should be presented, see our [Data Preparation](#) guidelines.

We recognize that there may be cases where openly sharing data may not be feasible (because of ethical or security considerations, or data protection issues). If you think that this applies to your article, please let the [editorial team](#) know at the submission stage, as we have policies in place to allow the publication of papers associated with such data, whilst maintaining the appropriate level of security.

8. Licenses

F1000Research articles are usually published under a CC BY license, which permits unrestricted use, distribution, and reproduction in any medium, provided the original work is properly cited, and leaves the copyright of the article with the current copyright holder (usually the author or his/her institution). The current version of the CC BY license used by *F1000Research* is [CC BY 4.0](#).

Data associated with *F1000Research* articles are made available, where possible, under the terms of a Creative Commons Public Domain Dedication (CC0 license). This facilitates and encourages re-use and helps prevent the problems of attribution stacking when combining multiple datasets each authored by multiple authors that use multiple different licences.

Referee reports that are published with a given article are also available under the CC BY license.

Hosting

4. Data Hosting

Data must be hosted by a stable and recognised open repository. Using such a repository ensures that your dataset continues to be available in a useable form in the future.

If there is a suitable subject-specific repository for your data, please deposit them there and include the Accession Number(s) or other Identifiers and database details in your manuscript. For some data types, such as genetic sequences and protein structures, it is essential that the data are deposited in GenBank and Protein Data Bank, respectively. For X-ray crystal structures, please also submit your validation reports. If there is no obvious subject-specific repository for your data, [we will be happy to advise](#) on suitable options.

For all other data, prepare the files according to the guidelines above and then submit to us along with your manuscript. We will need to know which file types you have and the approximate total size of your datasets. We will then arrange with you the best way to transfer the data to us. We will review and deposit the data on your behalf in the most suitable stable data repository. Please **do not** directly submit your data to an unstructured repository (e.g. figShare), as we have arrangements with several repositories that allow us to select the most suitable one for your data. This enables us to properly crosslink your data with the article and also allows readers to have the benefit of previewing your data within your article (for an example, see the data files in <http://f1000research.com/articles/1-3/v1>).

4.1 Non-exhaustive list of *F1000Research*-approved repositories

Below is a list of repositories that have already been approved for hosting data alongside an *F1000Research* article. If you are an author who wishes to use a repository not already on this list, or you manage a repository that you would like included on the list, please [contact us](#).

Please include the name of the repository used at the end of the manuscript, along with details indicated in the 'What to add to manuscript' column.

Institutional Repositories

F1000Research can accept papers with the underlying data being hosted by an approved institutional data repository, such as [Edinburgh DataShare](#). For other institutional repositories, please [contact us](#).

Call for Papers: IFLA Journal special issue on Research Data Services

Submission Deadline: 16 May 2016

Libraries and archives around the world are applying the principles of library and archival sciences to address challenges and provide new services related to research data management. Librarians are helping researchers address needs throughout the research data lifecycle, for example, by conducting assessment and outreach, consulting on data management plans and metadata, incorporating data into information literacy instruction and collection management, and providing data publication and preservation services.

IFLA Journal invites papers for a special issue focused on research data services and libraries across all continents. The issue will be published in October 2016 as Volume 42:3. In particular, the main goal of the special issue is to gather the latest theory, research, and state-of-the-art practices from libraries that are informing and innovating effective data services.

Each issue of IFLA Journal is made available Open Access upon publication on **IFLA's website**. Authors are also encouraged to make the accepted version of their manuscripts available in their personal or institutional repositories.



Guest Editors:

Wolfram Horstmann

Director

Göttingen State and University Library

Michael Witt

Head, Distributed Data Curation Center

Purdue University Libraries

V. CONCLUSION

Summary

- Research is about observations of nature, collecting and documenting evidence, and communication
- Research heritage is food for thought in communication and reproducibility
- Text and data are currently separated and need to be brought together to build an integrated corpus for knowledge networks, i.e. research heritage
- Information professions need to transform together to tackle the challenge
- Librarians, archivists and documentalists should form data specialists, engage in ongoing activities and support data curation

Tomorrow's Research Heritage integrates nature & books



- „A natureza é o único livro que oferece grande conteúdo em todas as folhas.“
- „Die Natur ist das einzige Buch, das auf allen Blättern großen Gehalt bietet.“

Goethe

SUB

NIEDERSÄCHSISCHE STAATS- UND
UNIVERSITÄTSBIBLIOTHEK GÖTTINGEN

Thank you for your attention



GEORG-AUGUST-UNIVERSITÄT
GÖTTINGEN